

Carbon Monoxide Detector

Wi-Fi Version

Model: WIFI-708

Version Number: V1.0



- 1 -

Product Description

Intelligent Wi-Fi carbon monoxide detector is designed with wifi networking technology and is used to detect carbon monoxide gas. The detector adopts high-performance electrochemical sensor, with sound and light alarm output. Alarm relay output, can work with electromagnetic valve. It has the characteristics of high stability and sensitivity . The alarm information is transmitted to the user APP through the cloud, which is simple and clear.

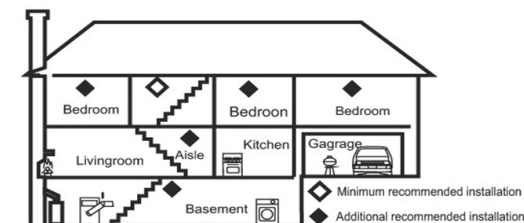
Electrical Specifications

Working Voltage: 110~230VAC 50HZ
Standby working current: 1.5W
Alarm Volume: 85dB/1m
Alarm Output: Relay Output (NC),
Control Output: 12V Solenoid valve output
WIFI: 2.4G -- 802.11 b/g/n.
Button: Test Mute button/ Test button.
Alarm concentration: 30 ppm, alarm within 2 minutes
50 ppm, alarm withing 60-90 minutes
100ppm alarm within 10-40 minutes
300ppm, alarm within 3 minutes
Working Temperature: -10~50°C.
Working Humidity: 10%~95% RH.

- 2 -

Functional Diagram

Single-storey house: in order to increase safety factor, it is recommended install one detector in each bedroom, install one detector in the place 6m away from the fire chimney and gas equipment.Multi-storey house: in order to increase the safety factor, it is recommended to install at least one detector in each bedroom, at least one detector in the basement, and one detector at the place 6m away from the fire and gas equipment.



- 3 -

Installation

1. Install the detector near the bedroom or living area that carbon monoxide leak might happen, confirm the alarm voice can be heard when you sleep.
2. It is better not to install the detector in the garage, kitchen and boiler room that may
3. cause false alarm. Avoid the area that are dirty, dusty or greasy environment, which will damage the sensor and make it work improperly.

Warm Prompt

1. The detector cannot detect natural gas (methane), propane, butane or other combustible gases.
2. Clean it once a month with household vacuum cleaner and soft brush.
3. Do not wipe the detector with detergent or solvent. Avoid spraying air freshener, hair spray paint or other aerosol on its accessories.
4. Pay attention to the alarm. Shut off the pipe valve immediately, open the window
5. to keep the indoor air circulation. Strengthen your fire awareness in everyday life.

Using Instruction

Note:Power on the detector and preheat for 90 seconds, then press the Reset/Test button to the network configuration.

LED status indication

status	Light	Sound	Valve Output	Relay Output
test	Yellow, green and red led flash alternatively	Yes	Yes	Yes
Preheat	Yellow led flash	No	No	No
Fault	Solid yellow led	No	No	No
Standby	Green on (In network) , Green led flash (Not Configure network)	No	No	No
Alarm	Red led flash	Yes	Yes	Yes

- 4 -

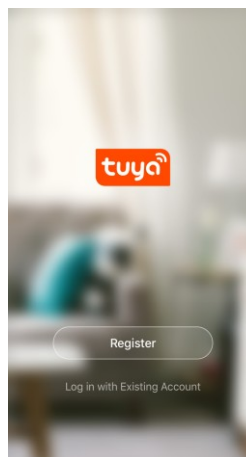
APP Instruction

1. Download “smart life” APP

Search “TUYA SMART” in the App Store(iOS) or other APK store(Android) to download and install the APP.

2. Registration

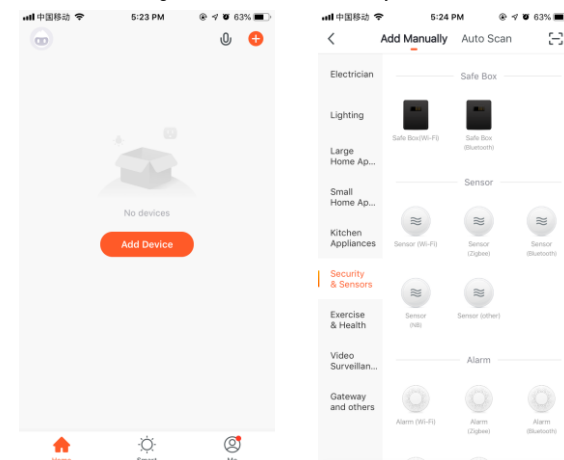
Click the APP and register an account according to the wizard.



- 5 -

3. Add Or Delete Devices

Click the APP and log in, click Add Device --> Security Sensor --> Sensor (Wi-Fi)



Plug in the detector, press the RESET button for 5 seconds to the Wi-Fi network configuration status(Green led flash fast means “smart link” mode, green led flash slowly means “AP” mode). APP interface displays two modes, default “smart link” mode. Switch the modes by short press the RESET button during the process of the network configuration, solid green led means network configuration is successful. Long press the button for 5 seconds to enter into network state. The detector can be self checked remotely through APP.

- 6 -